

# SONY



# Guide to Sony 800MHz Wireless Microphones

*Systems Configurations for Professional Camcorders*



by Sony Professional Audio  
& Video Acquisition Group

## -Table of Contents -

<b>Overview of Sony Wireless Guide .....</b>	<b>1-4</b>
Configuration #1 WRR-855A/810A UHF Diversity Tune.....	5
Configuration #2 Single WRR-855A / 810A / 805A UHF Tuner ....	6, 7
Configuration #3 WRR-855A UHF Diversity Tuner .....	7
Configuration #4 WRR-855A UHF Diversity Tuner .....	8
Sony Mounting Standards.....	9
Optional Mounting Hardware & Accessories .....	9
Portable UHF Tuners .....	10
UHF Body-Pack Transmitters .....	11
Handheld UHF Transmitters .....	12
Suggested Application Packages .....	13
Frequency Selection and Coordination Chart .....	15-18
Wireless Optional Accessories - Sales Models .....	19-21
Camcorder / Wireless Microphone Configuration Chart .....	22-24

## How to specify a complete wireless system:-Overview

1. Select a suitable wireless receiver for the camcorder.
  - Use Overview of Camcorders for Wireless as help (Pages 1-4)
  - Use Suggested Applications Packages as Guide (Pg. 13)
  - Use Camcorder / Wireless Microphone Configuration Chart as a guide. (Pg. 22-24)
  - Select wireless receiver and transmitter using Wireless Product overview as a guide (Pg. 10-12)
  
2. Select the required mounting accessories
  - Use the Configuration #1 to #4 as guide (Pg. 5-9)
  - Select optional accessories using the tables on (Pg. 8, 9, 19-21)
  
3. Select the channel allocation.

Since wireless use is a secondary use of the spectrum it is necessary to choose operating frequencies not in (primary) use in a given area. If it is desired to use multiple wireless system at once, it is recommended that the user consult the Regional Audio Manager for help in choosing channels.

- Use Frequency Selection and Allocation Chart as first guide. (Pg. 15)
- Use Frequency Selection and Allocation Chart as a more detailed guide (Pg.16-18)

# OVERVIEW OF CAMCORDERS FOR WIRELESS:

## Summary of Sony Camcorders and Wireless Capability:

### 1A. Sony Digital Camcorders with Built-in Wireless Slot

(Camcorder as shipped - See Page 5 of Wireless Guide for details)

<u>Camcorder Model</u>	<u>Wireless Models</u>	<u>Second Wireless</u>
DNW-7; DNW-9WS DNW-90; DNW-90WS DNV-5	WRR-855A	WRR-855A w/BTA-801 or WRR-810 or WRR-805A

### 1B. Sony Digital Camcorders with Built-in Wireless Slot

(Camcorders retrofitted (w/QR-SDH) for Anton Bauer Ni-Cad Batteries)

See Page 5 of Wireless Guide for details.

<u>Camcorder Model</u>	<u>Wireless Models</u>	<u>Second Wireless</u>
DNW-7; DNW-9WS DNW-90; DNW-90WS DNV-5	WRR-855A	WRR-855A w/BTA-801 or WRR-810 or WRR-805A

### 2A. Sony Digital Camcorders

(Camcorders as shipped. - See Page 6 of Wireless Guide for details.)

<u>Camcorder Model</u>	<u>Wireless Models</u>	<u>Second Wireless</u>
DVW-700; DVW-700WS DVW-707; DVW-709WS DVW-790WS HDW-700(A) HDW-F900	WRR-855A w/BTA-801 or WRR-810A or WRR-805A	No Provision

### 2B. Sony Digital Camcorders

(Camcorders retrofitted (w/QR-SDH) for Anton Bauer Ni-Cad Batteries.)

See Page 6 of Wireless Guide for details

<u>Camcorder Model</u>	<u>Wireless Models</u>	<u>Second Wireless</u>
DVW-700; DVW-700WS HDW-700(A) HDW-F900	WRR-855A w/BTA-801 or WRR-810 or WRR-805A	No Provision

## 2C. Sony Digital Camcorders

(Camcorders as shipped. - See Page 7 of Wireless Guide for details)

### Camcorder Model

DSR-500WS; DSR-300

### Wireless Models

WRR-855A w/CA-WR855

### Second Wireless

No Provision

## 2D. Sony Digital Camcorders

Camcorders retrofitted (w/QR-DSR) for Anton Bauer Ni-Cad Batteries  
See Page 9 of Wireless Guide for details

### Camcorder Model

DSR-500WS; DSR-300

### Wireless Models

WRR-855A w/BTA-801

### Second Wireless

No Provision

## 3A. Sony Analog Camcorders - BetacamSP

(Camcorder as shipped w/NP-1 battery box , or retro fitted w/BP-90 battery box)  
See Page 7 of Wireless Guide for details

### Camcorder Model

BVW-D600 / D-600WS  
BVW-400(A); BVW-300(A)  
BVW-200; BVV-5  
UVW-100B; PVV-3

### Wireless Models

WRR-855A w/BTA-801  
or WRR-810A  
or WRR-805A

### Second Wireless

No Provision

## 3B. Sony Analog Camcorders - BetacamSP

(Camcorder retrofitted with V-wedge mount (w/BKW-L601) for Li-Ion batteries.)  
See Page 6 of Wireless Guide for details

### Camcorder Model

BVW-D600 / D-600WS  
BVW-400(A); BVW-300A  
BVW-200; BVV-5  
UVW-100B; PVV-3

### Wireless Models

WRR-855A w/BTA-801  
or WRR-810A  
or WRR-805A

### Second Wireless

No Provision

## 3C. Sony Analog Camcorders - BetacamSP

(Camcorders retrofitted (w/QRSP-200A or QRSP-400A) for use with Anton Bauer  
Ni-Cad Batteries.)

See Page 6 of Wireless Guide for details.

### Camcorder Model

BVW-D600 / D-600WS  
BVW-400(A); BVW-300(A)  
BVW-200; BVV-5  
UVW-100B; PVV-3

### Wireless Models

WRR-855A w/BTA-801  
or WRR-810A  
or WRR-805A

### Second Wireless

No Provision

## **-Professional Camcorder/Wireless System Configuration Guide-**

The following is a comprehensive guide for setting up the right Sony wireless system with your camcorder. All configurations shown represent all current Sony professional camcorders and all current Sony wireless microphone models. Here are a few easy steps to configuring the proper system. Together with the details provided in this guide, these should help you to select the proper wireless equipment for use with your camcorder.

In general, a diversity system tuner (such as the **WRR-855A**) is better for more demanding applications. Especially where distance, or a lot of motion is a consideration, since it will provide greater freedom from “dropouts” due to multi-path signals.

In most other applications (where the environment is more predictable or where distance is not a factor), models such as the **WRR-810A** and **WRR-805A** will work very well and will provide a more cost-effective solution.

In any case, the choice of a system is based on the following criteria:

- A) Budget
- B) Size and weight requirements
- C) Application requirements (lavaliere or hand-held microphone) &
- D) Working distance (RF output between 5mW and 50mW)

**\*Note: Any Sony 800MHz transmitter can be used with any model Sony 800MHz receiver, as long as they are frequency matched (\*See Frequency Selection.)**

Please use the following as a guideline for determining your system’s requirements:

- 1) First, look at your camera: Is it a consumer model or broadcast model? What type of battery mounting system does it have (V-wedge, NP-1, BKW-L601)? Does it have an accessory DC power output? What type of audio connections does it have?

-This will help you determine which wireless models are directly compatible.

- 2) What mounting hardware comes with, or is available (optionally) for your camcorder?

-This will determine what (if any) additional hardware or accessories you will need to use a wireless system with your camcorder.

- 3) What is your application? (ENG, Broadcast Production, Event Videography, etc...?)

-This will determine which is the right wireless system for you, once you have decided your overall direction (\*See Suggested Application Systems). Certainly, budget may also be a consideration. That is why Sony has a wide selection of wireless components for every application and budget.

**Configuration # 1: WRR-855A/810A UHF Diversity Tuners**

(Betacam SX drop-in configuration)
<b>Models:</b>
DNW-7
DNW-9WS
DNW-90
DNW-90WS
DNV-5 (dockable VTR)

Fig. 1



DNW-9WS, shown with WRR-855A (above) in breakaway. BPL-60 battery is mounted via "V"-mount to rear of camera. WRR-855A power and audio connections are automatically made via multi-pin connector inside camera slot.

Fig.2



DNW-9WS, shown with WRR-855A in same configuration (installed-rear angle view)

Fig. 3



DNW-9WS, shown with one WRR-855A installed in same configuration, plus a second WRR-855A mounted to rear with A-8278-057-A mount and BTA-801A adapter. WRR-855A power is via 4-pin DC connector (supplied with BTA-801) to camera accessory power jack (shown) and audio via 12" XLR to XLR connection (user supplied).

Fig.4



\*SX camcorder shown with internally mounted WRR-855A and WRR-810A mounted externally with the optional A-8278-057-A bracket.

Typical Package:

Required part:	Qty
WRR-855A (tuner)	1
Transmitter	1
<b>Option ( for 2<sup>nd</sup> tuner)</b>	
A8278-057-A bracket <sup>1</sup>	1
WRR-855A	1
BTA-801 (ADAPTER)	1
Transmitter	1

<sup>1</sup> The A8278-057-A bracket is supplied with all Digital Betacam and HDW-700A camcorders, as well as with the Optional BKW-L601

**Note:** As below in configuration # 2, an Anton Bauer battery adapter, with their optional ABWMKKIT bracket, may be added for mounting of an additional tuner with the above listed models. WRR-810A or WRR-805A may also be used as a second tuner with the existing bracket (plus X-0248-167-1 dual plate adapter for WRR-805A).

## Configuration #2: Single WRR-855A / 810A / 805A UHF Tuners

**Works with:** Camcorders equipped with a NP-1 box, BP-90 (DC-500 box) BKW-L601 bracket -or- Anton Bauer battery adapter

<b>This configuration applies to the following models:</b>
<b>Digital Betacam: Has Integrated Li-Ion Battery Mount (V-mount)</b>
(Supplied w/ A8278-057-A bracket)
<ul style="list-style-type: none"> <li>Option: DC-L1 and DC-L90 Sony NiCad Box w/ V-wedge Mounts</li> <li>Option: Anton Bauer QR-SDH Battery Mount w/ ABWMKKIT wireless adapter plate</li> </ul>
<b>Models:</b>
DVW-700
DVW-700WS
DVW-707
DVW-709WS
DVW-790WS
<b>HD-CAM: Has Integrated LiIon Battery Mount (V-mount)</b>
(Supplied w/ A8278-057-A bracket)
<ul style="list-style-type: none"> <li>Option: DC-L1 and DC-L90 Sony Ni-Cad Mounts</li> <li>Option: Anton Bauer QR-SDH Battery Mount with ABWMKKIT wireless adapter plate</li> </ul>
<b>Models:</b>
HDW-700
HDW-700A
HDW-F900

<b>This configuration applies to the following models:</b>
<b>Betacam/Betacam SP: Supplied with NP-1 box</b>
<ul style="list-style-type: none"> <li>Option: BKW-L601 Li-Ion Battery Bracket</li> </ul>
(Includes A8278-057-A wireless bracket)
<ul style="list-style-type: none"> <li>Option: Anton Bauer QRSP-200/400A Battery Mount with ABWMKKIT wireless adapter plate (*see below)</li> </ul>
<b>Models:</b>
BVW-300/300A* (QRSP-200A w/ ABWMKKIT)
BVW-400/400A* (QRSP-400A w/ ABWMKKIT)
BVW-D600 (QRSP-400A w/ ABWMKKIT)
BVW-D600WS (QRSP-400A w/ ABWMKKIT)
UVW-100B (QRSP-200A w/ ABWMKKIT)
DXC-D30/PVV-3* (QRSP-200A w/ ABWMKKIT)
DXC-D35/PVV-3 (QRSP-200A w/ ABWMKKIT)
BVV-5 (QRSP-200A w/ ABWMKKIT)
(*discontinued models)

\* A-8278-057-A may be required for some models. See Configuration Chart.

Fig. 5



WRR-855A shown inserted in BTA-801A adapter mounted to BVW-D600 or BVW-600WS (fitted with a BKW-L601 and supplied A-8278-057-A bracket). Battery is BPL-90. Power via camcorder 4 pin DC connector. (Supplied w/BTA-801). Audio connection is via user supplied 12" XLR-XLR cable.

Fig. 6



WRR-810A shown mounted to BVW-600WS with A-8278-057-A bracket. Battery is BPL-60. Power via WRR-810A internal "AA" batteries. Audio is via XLR connector to camcorder audio input (user supplied).

Fig. 7



WRR-805A shown mounted to BVW-600WS with supplied case on A-8278-057-A bracket and optional X-0248-167-1 plate adapter. Battery is BPL-60. Power via WRR-805A internal "AA" batteries. Audio is via optional K-1334 XLR connector to camcorder audio input.



Fig. 8



WRR-855A inserted into BTA-801 adapter and mounted to a BVW-600WS via the NP-1 battery box. Power is provided via a 4-pin DC connector on camcorder (cable supplied with BTA-801). A WRR-810A or WRR-805A may also be mounted to the NP-1. The WRR-805A also requires the optional X-0248-167-1 dual bracket.

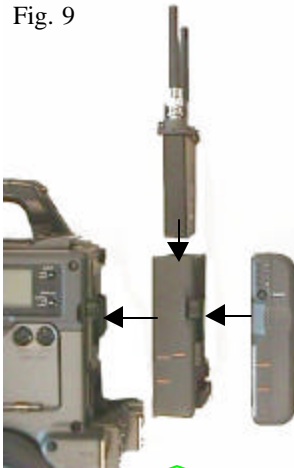
Typical package:

Required part	QTY
WRR-855A, WRR-810A or WRR-805A	1
BTA-801 (for WRR-855A only)	1
* Optional X-0248-167-1bracket (for WRR-805A only)	1
* Transmitter	1

### Configuration #3: WRR-855A UHF Diversity Tuner

**Works with:** DVCAM models w/ CA-WR855 (optional adapter), or \*Anton Bauer QR-DSR optional adapter with ABWMKKIT wireless adapter plate.

Fig. 9



DVCAM/CAWRR-855A ass'ly shown in breakout with BPL-60A battery

Fig. 10



DVCAM/CAWR-855A (Shown assembled)

Fig. 11



DVCAM/CAWR-855A Shown assembled (rear angle)

DVCAM Models:
DSR-500WS
DSR-300 (A)
DSR-200(/A) <sup>1 2</sup>
DSR-130WS <sup>2</sup>

\* A WRR-810A or WRR-805A may also be mounted to DVCAM models. WRR-810A requires the use of the optional A-8278-057-A bracket. The WRR-805A also requires this, plus the X-0248-167-1 dual bracket. These may not be mounted in addition to the CA-WR855 adapter box, as this leaves no additional space on the rear of the camcorder to mount the A-8278-057-A bracket.

Typical Package:  
(DSR-300 / 500WS)

Required Part	QTY
WRR-855A (ch)	1
CA-WR855	1
*Transmitter	1

<sup>1</sup> Requires DABK-L201 adapter

<sup>2</sup> Supplied with NP-1 box. Requires optional BTA-801 adapter.

## Configuration # 4 WRR-805A UHF Tuner

**Works with:** Any consumer camcorder. Mount via supplied case/mount and 1/8" stereo mini-plug connector. For camcorder models using the A-8278-057-A or BKW-L601 bracket, the WRR-805A may be mounted using an optional, dual mounting adapter (X-0248-167-1).

Fig. 12



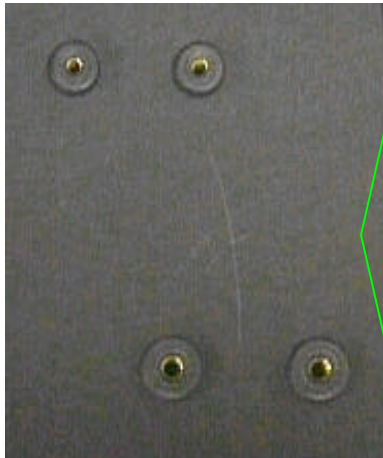
The **WRR-805A** Tuner shown mounted to a DCR-VX100 camcorder. Using a locking Velcro strap, mounting to the camcorder is very easy. The mount also rotates to facilitate the proper angle for reliable reception.

Fig. 13



Balanced mic/line inputs 1 & 2 (left) and 4-pin DC connector (right) on back of DSR-500 camcorder. Standard connectors on all Broadcast model Sony camcorders BETACAM, BetaSP, Digital Beta, HDCAM, DV (located opposite side on some models).

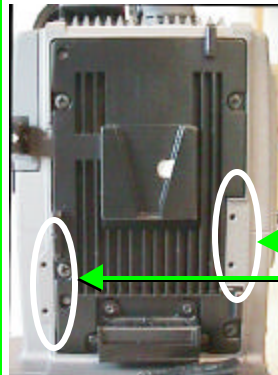
## Sony Wireless Mounting Standards



The **"4-hole"** mount is used by several Sony professional camcorder bracket systems, including:

- A-8278-057-A (included with: BKW-L601, BKW-L201, BKW-L403)
- X-0248-167-1
- BTA-801
- NP-1
- DC-500
- Anton Bauer QR-SDH or QR-DSR with ABWMK-KIT

Fig. 14



The **"V-Wedge"** mount is used by:

- CA-WR855 (for DSR-300 & 500 *only*)

The 4 rear-mounting screw holes will allow attachment of the A-8278-057-A bracket, alternatively.

## Anton Bauer Adapter System (for use with compatible Anton Bauer NiCad batteries).

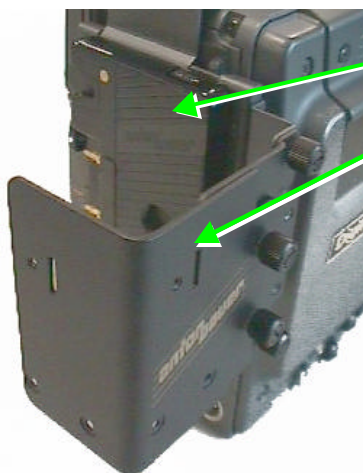


Fig. 15

**Anton Bauer QR-SDH** battery adapter shown with **ABWMK-KIT** mounted. The ABWMK-KIT comes supplied with a side mount and rear-mount plate adapter. These are both configured like the 4-hole mounting system above and allows mounting of the BTA-801, WRR-810A or X-0248-167-1 mounting adapter.



Fig. 16

**Anton Bauer QR-SDH** Shown again with just the side plate portion of the ABWMK-KIT. This side plate has three screw positions for mounting at various distances from the battery.

**\*Note:** The BTA 801A may be mounted to either of these two plates. However, the user will need to provide a slightly longer DC cable, as the one supplied with the BTA-801A

# Optional Mounting Hardware & Accessories

**X-0248-167-1 Dual Mount**



Will mount 1 or 2 WRR-805As (screws supplied) to a camcorder supplied with an NP-1, DC-500 or an A-8278-057-A bracket. The clip on back of WRR-805A case slides on.

**A-8278-057-A Mounting Bracket.**



For mounting of any Sony UHF portable tuner (with tuner supplied hardware shown) to most Sony professional camcorder models. Included with BKW-L601 battery mount.

**CA-WR855 Adapter.**



Using the "V" wedge mount system allows WRR-855A to be mount to DVCAM models and provides power and audio connections to/from the camcorder

**BTA-801 Adapter.**



Allows WRR-855A to be mounted to Sony camcorders equipped with an A-8278-057-A or NP-1, DC-500

**NP-1 Box**



Battery case/ mount. Supplied with Betacam, Betacam SP and some DVCAM models. Allows mounting of BTA-801A, WRR-810A or X-0248-167-1 bracket

**DC-500 Box**



**For the BP-L90 battery.** Optional battery case/mount for Betacam, Betacam SP and some DVCAM models. Allows mounting of BTA-801A, WRR-810A or X-0248-167-1 bracket

**Supplied Hardware.**



Top Piece



Bottom Piece

Included with the BTA-801A and WRR-810A. Mounts to 4-hole system on NP-1, A-8278-057-A, etc... Clips on the BTA-801A & WRR-810A insert into these.

**K-1334 Adapter Cable**



Converts the locking 1/8" mini-plug output of WRR-805A to balanced male XLR. This allows the WRR-805A to be connected to any professional camcorder.

**WRR-805A Case / mount**



(supplied accessory). Main case (left) can be mounted to optional dual bracket. Detached Velcro strap (right) allows mounting to handle of consumer camcorders.

## Anton Bauer Battery Adapters/Brackets \*

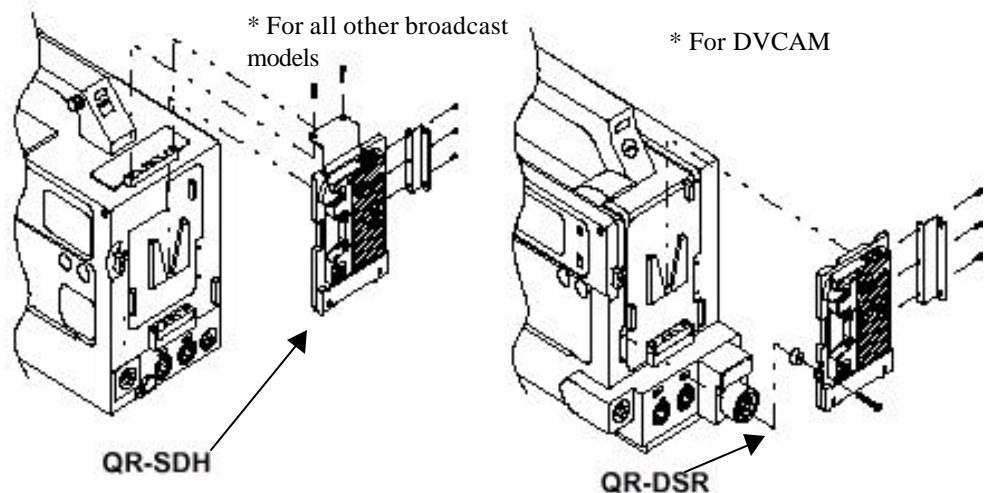


Fig. 16

\* Illustration shown provided by Anton Bauer



## Portable UHF Tuners

### WRR-855A (CH) Diversity UHF Tuner



- Diversity UHF synthesized tuner (94 channels)
- LCD display of status (AF, RF, CH, GROP, battery)
- Fits directly into Betacam SX camcorders
  - Returns audio back to camcorder
  - Transmits display information to SX model viewfinder
- Fits most Sony broadcast camcorders with BTA-801 or CA-WR855 adapter
- Receives power from camera:
  - SX models directly via multi-pin connector
  - DVCAM Via CA-WRR855
  - All other models via BTA-801 adapter box (4-pin accessory camera power)
- Available for channels 64/65, 66/67 & 68/69

### WRR-810A (CH) UHF Tuner



- UHF synthesized tuner (94 channels)
- LCD display of status (AF, RF, CH, GROP, battery)
- Fits most Sony broadcast camcorders with:
  - NP-1
  - BBKW-L601
  - DSBK-201
  - BKW-L403, or
  - Anton Bauer QRD-700
- Receives power from camera via 4-pin DC accessory output
- Balanced XLR audio out plugs into camcorder mic input
- Available for channels 64/65, 66/67 & 68/69

### WRR-805A UHF Non-Diversity Tuner



- Light-weight and low-cost
- UHF synthesized tuner (94 channels)
- LCD display of status (AF, RF, CH, GROP, battery)
- Fits most Sony consumer / prosumer camcorders via easy Velcro® strap-mount (mounts to camcorder handle).
- 6 hours of continuous power (2-“AA” alkaline batteries).
- Audio output via balanced 1/8” mini-jack or via optional XLR adapter cable.
- Variable headphone monitor output
- Optional balanced XLR audio connecting cable plugs into camcorder audio input
- Available for channels 64/65, 66/67 & 68/69

# UHF Transmitter Options:

## UHF Body-Pack Transmitters :

### WRT-805A (CH)



- **Low-cost**
- **Light weight**
- **10mW output**
- **6 hrs w/ 1 “AA” batteries**
- **Channels: 64/65, 66/67 & 68/69**

- **Accepts:**
  - ECM-121BMP- Same as above with short cord.
  - ECM-44BMP- Omni lav. General purpose
  - ECM-166BMP- Uni lavalier. Instrumental/vocal use
  - ECM-77BMP- Omni lavalier. High-quality vocal/instrumental
  - ECM-310BMP- Headset. Vocal/announcer

### WRT-822A (CH)



- **Sturdy and light-weight magnesium-alloy case**
- **10mW RF output**
- **8 hrs w/2 “AA” batteries**
- **Channels 64/65, 66/67 & 68/69**

- **Accepts:**
  - ECM-44BC Omni lav. General purpose
  - ECM-55BC Omni lav. General Purpose
  - ECM-66BC Uni lav. Instrumental/vocal use
  - ECM-166BC Uni lav. Instrumental/vocal use
  - ECM-77BC Omni lav. High-quality vocal/instrumental
  - ECM-310BC Headset. Vocal/announcer
  - ECM-350BC Headset. Vocal/announcer
  - EC-1.5CF 1.5m Microphone adapter cable

### WRT-860A (CH)



- **Rugged, all-metal case**
- **Ultra-compact, lightweight**
- **20mW RF output**
- **6 hrs. of continuous operation w/2 “AA” batteries**
- **Channels 64/65, 66/67 & 68/69**

- **Accepts:**
  - ECM-44BC Omni lav. General purpose
  - ECM-55BC Omni lav. General Purpose
  - ECM-66BC Uni lav. Instrumental/vocal use
  - ECM-166BC Uni lav. Instrumental/vocal use
  - ECM-77BC Omni lav. High-quality vocal/instrumental
  - ECM-310BC Headset. Vocal/announcer
  - ECM-350BC Headset. Vocal/announcer
  - EC-1.5CF 1.5m Microphone adapter cable

## Hand-held UHF Transmitters:

### WRT-800A68



- Electret condenser element
- Designed for general purpose / speech applications
- Low-cost UHF transmitter
- 5mW RF output
- 12 hrs w/1 “AA” battery
- Channel 68/69

### WRT-807A (CH)



- High-quality dynamic element (same as F-780) for demanding vocal applications
- Rugged, all-metal construction
- Integrated LCD display of transmitter function
- Locking on/off switch
- 5 hours of continuous operation w/ single “AA” alkaline battery
- 10 mW RF output
- Available on Channels 64/65, 66/67 & 68/69

### WRT-867A(CH)/X



- High-quality dynamic hyper-cardioid element (same as F-780/X)
- For critical vocal applications
- 10mW RF output
- 4 hrs w/1 “AA” battery
- Available on Channels 64/65, 66/67 & 68/69

### WRT-808A (CH)



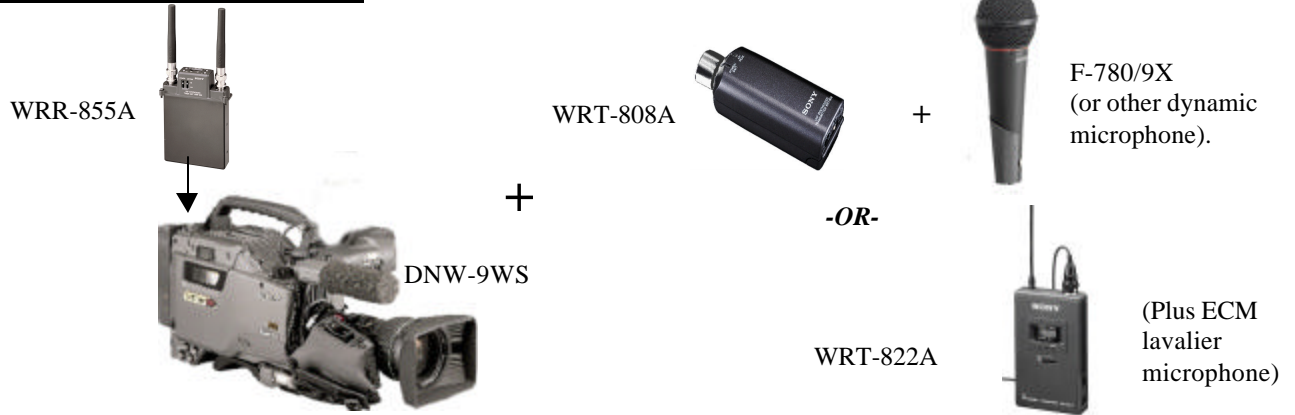
- Plug-on UHF transmitter for ENG applications
- Converts almost any mic\* to wireless operation
- Mic or line level (variable)
- 10mW/50mW RF output (switchable)
- 4 hrs continuous operation w/2 “AA” batteries
- Available on Channels 64/65, 66/67 & 68/69

**\*Works with:**

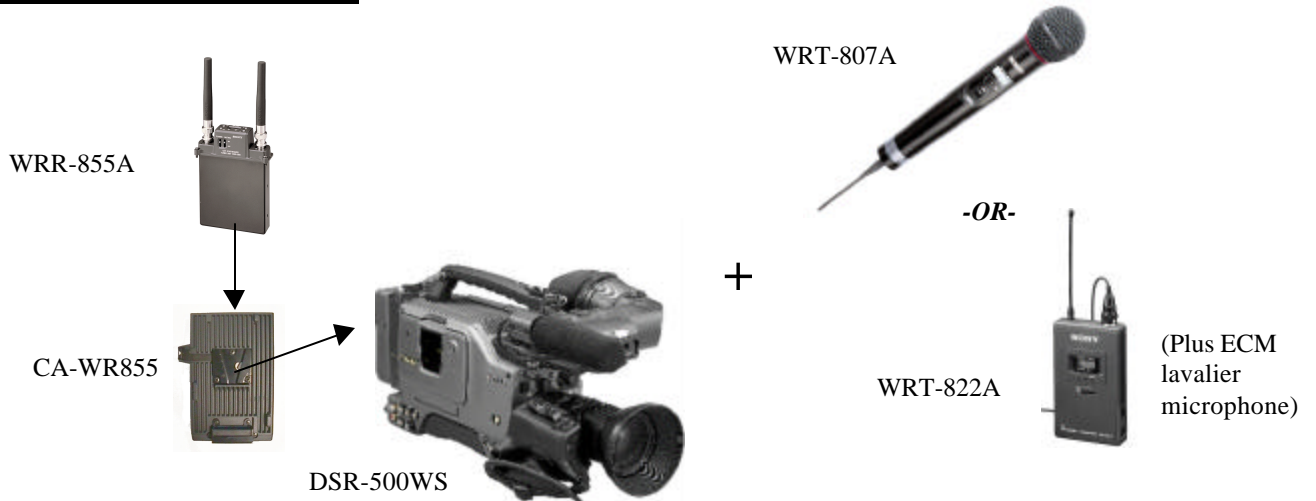
Any low-impedance XLR-balanced, non-phantom powered microphone or balanced, line-level source

## Suggested Application Packages

### Package #1 News/ENG



### Package #2 Production



### Package #3 Event Videography



(Page intentionally left blank)





# Frequency Selection and Coordination Charts

## **\*A Note about Frequency Selection –**

Sony's wireless systems operate across **6 TV** channels (64-69). Each system operates across a single pair of these channels: **64** operates on 64 & 65; **66** operates on 66 & 67; and **68** operates on 68 & 69. Each of these systems is tunable to any of 47 frequencies on each TV channel. After each model number is the designation (CH). This refers to 64, 66 or 68 versions of this model.

**Make sure to match the order frequency number (64, 66 or 68) on *both* the transmitter *and* receiver, as these each have a channel designation** (e.g.- WRT822A66 with WRR-855A66). Choice of order frequency is arbitrary, unless otherwise determined by a particular requirement (such as available frequencies in a given location. eg.: A TV station operating on channel 68 in your area would cause potential interference for wireless systems. However, channel 69 should still function properly, as should other channels. If you have any questions regarding order frequency selection, please consult your Regional Audio Account Manager.

- Features and specifications are subject to change without notice

<b>GROUP Channels 00 64/65</b>											
<b>CH</b>		<b>FREQUENCY</b>	<b>CH</b>		<b>FREQUENCY</b>	<b>CH</b>		<b>FREQUENCY</b>	<b>CH</b>		<b>FREQUENCY</b>
64	01	770.125	64	25	773.125	65	01	776.125	69	25	779.125
64	02	770.250	64	26	773.250	65	02	776.250	69	26	779.250
64	03	770.375	64	27	773.375	65	03	776.375	69	27	779.375
64	04	770.500	64	28	773.500	65	04	776.500	69	28	779.500
64	05	770.625	64	29	773.625	65	05	776.625	69	29	779.625
64	06	770.750	64	30	773.750	65	06	776.750	69	30	779.750
64	07	770.875	64	31	773.875	65	07	776.875	69	31	779.875
64	08	771.000	64	32	774.000	65	08	777.000	69	32	780.000
64	09	771.125	64	33	774.125	65	09	777.125	69	33	780.125
64	10	771.250	64	34	774.250	65	10	777.250	69	34	780.250
64	11	771.375	64	35	774.375	65	11	777.375	69	35	780.375
64	12	771.500	64	36	774.500	65	12	777.500	69	36	780.500
64	13	771.625	64	37	774.625	65	13	777.625	69	37	780.625
64	14	771.750	64	38	774.750	65	14	777.750	69	38	780.750
64	15	771.875	64	39	774.875	65	15	777.875	69	39	780.875
64	16	772.000	64	40	775.000	65	16	778.000	69	40	781.000
64	17	772.125	64	41	775.125	65	17	778.125	69	41	781.125
64	18	772.250	64	42	775.250	65	18	778.250	69	42	781.250
64	19	772.375	64	43	775.375	65	19	778.375	69	43	781.375
64	20	772.500	64	44	775.500	65	20	778.500	69	44	781.500
64	21	772.625	64	45	775.625	65	21	778.625	69	45	781.625
64	22	772.750	64	46	775.750	65	22	778.750	69	46	781.750
64	23	772.875	64	47	775.875	65	23	778.875	69	47	781.875
64	24	773.000	64			65	24	779.000			782.000
<b>GROUP 11</b>			<b>GROUP 12</b>			<b>GROUP 13</b>					
<b>CH</b>		<b>FREQUENCY</b>	<b>CH</b>		<b>FREQUENCY</b>	<b>CH</b>		<b>FREQUENCY</b>			
64	05	770.625	65	01	776.125	64	03	770.375			
64	14	771.750	65	05	776.625	64	13	771.625			
64	25	773.125	65	11	777.375	64	18	772.250			
64	41	775.125	65	25	779.125	64	26	773.250			
64	47	775.875	65	28	779.500	64	37	774.625			
65	12	777.500	65	36	780.500	64	40	775.000			
65	16	778.000	65	41	781.125	64	44	775.500			
65	30	779.750	65	43	781.375	64	46	775.750			
65	37	780.625									
65	40	781.000									
65	42	781.250									
11-Channel Group. Use when both channels 65 & 65 are available			8-channel Group. Use when channel 64 is on air			8-channel Group. Use when channel 65 is on air					
<b>GROUP A1</b>			<b>GROUP A2</b>			<b>GROUP A3</b>					
<b>CH</b>		<b>FREQUENCY</b>	<b>CH</b>		<b>FREQUENCY</b>	<b>CH</b>		<b>FREQUENCY</b>			
64	05	770.625	65	02	776.250	64	01	770.125			
64	12	771.500	65	19	778.375	64	18	772.250			
64	15	771.875	65	43	781.375	64	42	775.250			
65	24	779.000									
65	33	780.125									
For 19-Channel Group. Used in conjunction with tuners in other versions (66, 68) when <b>all</b> TV channels are available (64-69)			For 13-channel Group. Used in conjunction with tuners in other versions (66,68) when <b>all odd</b> numbered TV channels are available (65, 67, 69)			For 13-channel Group. Used in conjunction with tuners in other versions (66,68) when <b>all even</b> numbered TV channels are available (64, 66, 68)					

<b>GROUP Channels</b>											
<b>00</b>		<b>66/67</b>									
<b>CH</b>		<b>FREQUENCY</b>	<b>CH</b>		<b>FREQUENCY</b>	<b>CH</b>		<b>FREQUENCY</b>	<b>CH</b>		<b>FREQUENCY</b>
66	01	782.125	66	25	785.125	67	01	788.125	67	25	791.125
66	02	782.250	66	26	785.250	67	02	788.250	67	26	791.250
66	03	782.375	66	27	785.375	67	03	788.375	67	27	791.375
66	04	782.500	66	28	785.500	67	04	788.500	67	28	791.500
66	05	782.625	66	29	785.625	67	05	788.625	67	29	791.625
66	06	782.750	66	30	785.750	67	06	788.750	67	30	791.750
66	07	782.875	66	31	785.875	67	07	788.875	67	31	791.875
66	08	783.000	66	32	786.000	67	08	789.000	67	32	792.000
66	09	783.125	66	33	786.125	67	09	789.125	67	33	792.125
66	10	783.250	66	34	786.250	67	10	789.250	67	34	792.250
66	11	783.375	66	35	786.375	67	11	789.375	67	35	792.375
66	12	783.500	66	36	786.500	67	12	789.500	67	36	792.500
66	13	783.625	66	37	786.625	67	13	789.625	67	37	792.625
66	14	783.750	66	38	786.750	67	14	789.750	67	38	792.750
66	15	783.875	66	39	786.875	67	15	789.875	67	39	792.875
66	16	784.000	66	40	787.000	67	16	790.000	67	40	793.000
66	17	784.125	66	41	787.125	67	17	790.125	67	41	793.125
66	18	784.250	66	42	787.250	67	18	790.250	67	42	793.250
66	19	784.375	66	43	787.375	67	19	790.375	67	43	793.375
66	20	784.500	66	44	787.500	67	20	790.500	67	44	793.500
66	21	784.625	66	45	787.625	67	21	790.625	67	45	793.625
66	22	784.750	66	46	787.750	67	22	790.750	67	46	793.750
66	23	784.875	66	47	787.875	67	23	790.875	67	47	793.875
66	24	785.000	66			67	24	791.000	67		
<b>GROUP 11</b>			<b>GROUP 12</b>			<b>GROUP 13</b>					
<b>CH</b>		<b>FREQUENCY</b>	<b>CH</b>		<b>FREQUENCY</b>	<b>CH</b>		<b>FREQUENCY</b>			
66	05	782.625	67	01	788.125	66	03	782.375			
66	14	783.750	67	05	788.625	66	13	783.625			
66	25	785.125	67	11	789.375	66	18	784.250			
66	41	787.125	67	25	791.125	66	26	785.250			
66	47	787.875	67	28	791.500	66	37	786.625			
67	12	789.500	67	36	792.500	66	40	787.000			
67	16	790.000	67	41	793.125	66	44	787.500			
67	30	791.750	67	43	793.375	66	46	787.750			
67	37	792.625									
67	40	793.000									
69	42	793.250									
11-Channel Group. Use when both channels 68 & 69 are available			8-channel Group. Use when channel 68 is on air			8-channel Group. Use when channel 69 is on air					
<b>GROUP A1</b>			<b>GROUP A2</b>			<b>GROUP A3</b>					
<b>CH</b>		<b>FREQUENCY</b>	<b>CH</b>		<b>FREQUENCY</b>	<b>CH</b>		<b>FREQUENCY</b>			
66	02	782.250	67	07	788.875	66	06	782.750			
66	24	785.000	67	33	792.125	66	32	786.000			
66	29	785.625	67	45	793.625	66	44	787.500			
67	16	790.000									
67	18	790.250									
67	39	792.875									
For 19-Channel Group. Used in conjunction with tuners in other versions (64, 68) when <b>all</b> TV channels are available (64-69)			For 13-channel Group. Used in conjunction with tuners in other versions (64,68) when all <b>odd</b> numbered TV channels are available (65, 67, 69)			For 13-channel Group. Used in conjunction with tuners in other versions (64,68) when all <b>even</b> numbered TV channels are available (64, 66, 68)					

<b>GROUP Channels</b>											
<b>00</b>		<b>68/69</b>									
<b>CH</b>		<b>FREQUENCY</b>	<b>CH</b>		<b>FREQUENCY</b>	<b>CH</b>		<b>FREQUENCY</b>	<b>CH</b>		<b>FREQUENCY</b>
68	01	794.125	68	25	797.125	69	01	800.125	69	25	803.125
68	02	794.250	68	26	797.250	69	02	800.250	69	26	803.250
68	03	794.375	68	27	797.375	69	03	800.375	69	27	803.375
68	04	794.500	68	28	797.500	69	04	800.500	69	28	803.500
68	05	794.625	68	29	797.625	69	05	800.625	69	29	803.625
68	06	794.750	68	30	797.750	69	06	800.750	69	30	803.750
68	07	794.875	68	31	797.875	69	07	800.875	69	31	803.875
68	08	795.000	68	32	798.000	69	08	801.000	69	32	804.000
68	09	795.125	68	33	798.125	69	09	801.125	69	33	804.125
68	10	795.250	68	34	798.250	69	10	801.250	69	34	804.250
68	11	795.375	68	35	798.375	69	11	801.375	69	35	804.375
68	12	795.500	68	36	798.500	69	12	801.500	69	36	804.500
68	13	795.625	68	37	798.625	69	13	801.625	69	37	804.625
68	14	795.750	68	38	798.750	69	14	801.750	69	38	804.750
68	15	795.875	68	39	798.875	69	15	801.875	69	39	804.875
68	16	796.000	68	40	799.000	69	16	802.000	69	40	805.000
68	17	796.125	68	41	799.125	69	17	802.125	69	41	805.125
68	18	796.250	68	42	799.250	69	18	802.250	69	42	805.250
68	19	796.375	68	43	799.375	69	19	802.375	69	43	805.375
68	20	796.500	68	44	799.500	69	20	802.500	69	44	805.500
68	21	796.625	68	45	799.625	69	21	802.625	69	45	805.625
68	22	796.750	68	46	799.750	69	22	802.750	69	46	805.750
68	23	796.875	68	47	799.875	69	23	802.875	69	47	805.875
68	24	797.000				69	24	803.000			
<b>GROUP 11</b>			<b>GROUP 12</b>			<b>GROUP 13</b>					
<b>CH</b>		<b>FREQUENCY</b>	<b>CH</b>		<b>FREQUENCY</b>	<b>CH</b>		<b>FREQUENCY</b>			
68	05	794.625	69	01	800.125	68	03	794.375			
68	14	795.750	69	05	800.625	68	13	795.625			
68	25	797.125	69	11	801.375	68	18	796.250			
68	41	799.125	69	25	803.125	68	26	797.250			
68	47	799.875	69	28	803.500	68	37	798.625			
69	12	801.500	69	36	804.500	68	40	799.000			
69	16	802.000	69	41	805.125	68	44	799.500			
69	30	803.750	69	43	805.375	68	46	799.750			
69	37	804.625									
69	40	805.000									
69	42	805.250									
11-Channel Group. Use when both channels 68 & 69 are available			8-channel Group. Use when channel 68 is on air			8-channel Group. Use when channel 69 is on air					
<b>GROUP A1</b>			<b>GROUP A2</b>			<b>GROUP A3</b>					
<b>CH</b>		<b>FREQUENCY</b>	<b>CH</b>		<b>FREQUENCY</b>	<b>CH</b>		<b>FREQUENCY</b>			
68	06	794.750	69	11	801.375	68	10	795.250			
68	20	796.500	69	22	802.750	68	21	796.625			
68	24	797.000	69	30	803.750	68	29	797.625			
68	40	799.000	69	36	804.500	68	35	798.375			
69	04	800.500	69	40	805.000	68	39	798.875			
69	17	802.125	69	43	805.375	68	42	799.250			
69	23	802.175	69	45	805.625	68	44	799.500			
69	47	805.875									
For 19-Channel Group. Used in conjunction with tuners in other versions (64,66) when <b>all</b> TV channels are available (64-69)			For 13-channel Group. Used in conjunction with tuners in other versions (64,66) when all <b>odd</b> numbered TV channels are available (65, 67, 69)			For 13-channel Group. Used in conjunction with tuners in other versions (64,66) when all <b>even</b> numbered TV channels are available (64, 66, 68)					

## **WIRELESS OPTIONAL ACCESSORIES- SALES MODELS**

<b>MODEL #</b>	<b>DESCRIPTION</b>	<b>WORKS WITH MODELS:</b>	<b>LIST PRICE</b>
<b>BTA-801</b>	CAMCORDER ADAPTER FOR WRR-855A	<b>ALL BROADCAST MODEL CAMCORDERS</b> (MAY REQUIRE OPTIONAL BKW-L601 BATTERY ADAPTER OR ANTON BAUER EQUIVELENT)	\$500.00
<b>AN-820A</b>	ACTIVE ANTENNA	ALL RACK-MOUNT TUNERS & DIVIDERS EXCEPT FOR WRR-800A/WRR-802A	\$192.00
<b>CA-WR855</b>	DSR-300/500 CAMCORDER ADPTER FOR WRR-855A	WRR-855A WITH DSR-300, AND DSR-500 CAMCORDERS ONLY	\$475.00
<b>EC.04CM</b>	XLR MALE > SMC-9-4P ADAPTER CABLE	WRR-810A	\$44.00
<b>EC-15CF</b>	XLR FEMALE > SMC-9-4P ADAPTER CABLE	WRT-820A, WRT-822A, WRT-860A	\$65.00
<b>ECM-121BMP</b>	OMNI LAVALIER MIC	WRT-805A	\$28.00
<b>ECM-122BMP</b>	OMNI LAVALIER MIC	WRT-805A	\$28.00
<b>ECM-166BC</b>	UNI LAVALIER MIC	WRT-820A, WRT-822A, WRT-860A	\$142.00
<b>ECM-166BMP</b>	UNI LAVALIER MIC	WRT-805A	\$132.00
<b>ECM-310BC</b>	UNI HEADSET MIC	WRT-820A, WRT-822A, WRT-860A	\$105.00
<b>ECM-310BMP</b>	UNI HEADSET MIC	WRT-805A	\$105.00
<b>ECM-350BC</b>	UNI HEADSET MIC	WRT-820A, WRT-822A, WRT-860A	\$495.00
<b>ECM-44BMP, BC</b>	OMNI LAVALIER MIC	<b>BMP-WRT-805A, BC-WRT-820A, WRT-822A, WRT-860A</b>	\$168.00
<b>ECM-55BC</b>	OMNI LAVALIER MIC	WRT-820A, WRT-822A, WRT-860A	\$285.00
<b>ECM-66BC</b>	UNI LAVALIER MIC	WRT-820A, WRT-822A, WRT-860A	\$360.00
<b>ECM-77BC</b>	OMNI LAVALIER MIC	WRT-820A, WRT-822A, WRT-860A	\$360.00
<b>ECM-77BMP</b>	OMNI LAVALIER MIC	WRT-805A	\$345.00
<b>GC-0.7MP/1</b>	1/8" MINIPLUG TO PHONE PLU ADAPTER CABLE	WRT-805A	\$55.00
<b>K-1161</b>	PHONE PLUG >SMC-9-4P ADAPTER CABLE	ALL RACK-MOUNT TUNERS & DIVIDERS EXCEPT FOR WRR-800A/WRR-802A	\$95.00
<b>K-1314</b>	1/4 WAVE ANTENNAS (Pr.)	<b>ALL SONY RACK-MOUNT TUNERS</b>	\$27.00
<b>K-1324</b>	SOLDERABLE 1/8" MINIPLUG	WRR-805A, WRT-805A	\$24.00
<b>K-1334</b>	1/8" LOCKING MINIPLUG TO XLR MALE ADAPTER CABLE	WRR-805A	\$40.00
<b>LCS-T805</b>	GUITAR STRAP SOFT CASE	WRT-805A	\$48.00
<b>RK-800A</b>	Rack-mount adapter kit	WRR-800A, WRR-802A	\$37.00
<b>SC-M800</b>	CARRYING CASE	FREEDOM PACKAGED SYSTEMS	\$100.00

<b>WBC-0.6B-P</b>	50 OHM COAXIAL ANTENNA CABLE (.6M)	ALL RACK-MOUNT TUNERS & DIVIDERS EXCEPT FOR WRR-800A/WRR-802A	\$25.00
<b>WBC-10B-5P</b>	50 OHM COAXIAL ANTENNA CABLE (10M)	ALL RACK-MOUNT TUNERS & DIVIDERS EXCEPT FOR WRR-800A/WRR-802A	\$98.00
<b>WBC-20B-5P</b>	50 OHM COAXIAL ANTENNA CABLE (20M)	ALL RACK-MOUNT TUNERS & DIVIDERS EXCEPT FOR WRR-800A/WRR-802A	\$122.00
<b>WBC-30B-5P</b>	50 OHM COAXIAL ANTENNA CABLE (30M)	ALL RACK-MOUNT TUNERS & DIVIDERS EXCEPT FOR WRR-800A/WRR-802A	\$165.00
<b>WBC-50B-5P</b>	50 OHM COAXIAL ANTENNA CABLE (50M)	ALL RACK-MOUNT TUNERS & DIVIDERS EXCEPT FOR WRR-800A/WRR-802A	

### **WIRELESS SUPPLIED ACCESSORIES- REPLACEMENT PARTS**

<b>WORKS WITH MODELS:</b>	<b>DESCRIPTION</b>	<b>KCP PART/ORDER #</b>	<b>PRICE</b>
MB-806A, WRR-801A	MODULE PANEL COVER	2-545-750-01	
WRR-800A, WRR-822A	AC ADAPTER	1-467-114-22	
WRT-800A	WINDSCREEN CAGE	X-3679-322-2	
WRT-800A	WINDSCREEN	3-603-339-01	
WRT-800A	ADJUSTMENT SCREWDRIVER	3-603-337-02	
WRT-800A, WRT-805A, WRR-805A, WRT-807A	RATTAIL ANTENNA	1-467-301-11	
WRT-805A	BELT-MOUNT SPRING	2-545-245-01	
WRR-805A, WRT-820A, WRT-822A, WRT-860A, WRR-810A	AA BATTERY CAGE ASS'Y	A-4521-033-D	
WRR-805A	1/8" CONNECTION CABLE	1-790-935-11	
WRR-805A	SOFT CASE/MOUNT ADAPTER	2-545-716-01	
WRT-807A	WINDSCREEN CAGE	X-3678-174-2	
WRT-807A	WINDSCREEN	3-682-258-01	
WRT-807A	MIC HOLDER	A-4508-029-A	
WRT-807A	HOLDER SCREW ADAPTER	2-525-614-11	
WRT-830A, WRT-810A	MIC HOLDER	A-4508-029-A	
WRT-830A, WRT-810A	HOLDER SCREW ADAPTER	2-100-952-00	
WRT-820A, WRT-822A	SOFT BELT CASE w/mount	2-540-964-01	
WRT-820A, WRT-822A	ANTENNA	1-501-458-12	
ICF-SC1PC	RF FILTER CLAMP	1-469-089-11	
ICF-SC1PC	AC ADAPTER (AC-S500)	1-475-527-11	
ICF-SC1PC	HELICAL ANTENNA	1-501-969-11	
ICF-SC1PC	EARPHONE	1-504-116-11	
ICF-SC1PC	SERIAL INTERFACE CABLE	1-783-377-11	
ICF-SC1PC	BELT CLIP	3-020-642-01	
ICF-SC1PC	CD-ROM	3-023-743-01	
ICF-SC1PC	FREQUENCY GUIDE	3-026-187-01	
ICF-SC1PC	MANUAL	3-861-712-11	
WRT-820A, WRT-822A	SOFT CASE/MOUNT ADAPTER	2-540-964-01	
WRR-855A	HELICAL ANTENNA	1-501-612-11	
WRR-810A	CASE/MOUNT ASSEMBLY	A-8265-089-A	
BTA-801	DC-POWER CABLE	1-751-484-11	

BTA-801, WRR-810A	<b>ADAPTER PLATE-TOP MOUNT</b>	2-540-028-01	
BTA-801, WRR-810A	SCREWS FOR ABOVE (X2)	7-682-547-09	
BTA-801, WRR-810A	<b>ADAPTER PLATE-BOTTOM MOUNT</b>	X-316-708-01	
BTA-801, WRR-810A	SCREWS FOR ABOVE (X2)	7-682-560-09	
WRR-805A	DUAL CAMCORDER MOUNT PLATE	X-0248-167-1	
ADAPTS BTA-801A & WRR-810A TO ALL PROFESSIONAL CAMCORDERS	CAMCORDER MOUNTING BRACKET	A-8278-057-A	
<b>SAD700</b>	Stand Adapter for Handheld Wireless Microphones		\$25.00

## Camcorder / Wireless Microphone Configuration Chart

CAMCORDERS					WIRELESS TUNERS				SUGGESTED WIRELESS PACKAGES		
CAMERA MODEL #	SUPPLIED MOUNTING HDWRE	OPTIONAL MOUNTING HDWRE (CAMCORDER)	WIRELESS RECEIVER POWER VIA:	AUDIO INPUT CONNECTOR TYPE	AUDIO OUTPUT CONNECTOR TYPE	COMPATIBLE UHF TUNER	SUPPLIED HDWRE	OPTIONAL MOUNTING HDWRE (TUNER)	PACKAGE #1 Hand-held	PACKAGE #2 Body-pack/lavalier	PACKAGE #3 Plug-on transmitter
<b>HDCAM</b>											
HDW-500	V-wedge for Li-Ion batteries (Includes A8278-057-A bracket)	Anton Bauer QR-SDH, w/ABWMKKIT adapter	WRR-855A-4-PIN 12V DC (w/BTA-801) WRR-810A, WRR-805A-internal "AA" batteries (x2)	XLR (X2).	BTA-801A, WRR-810A supplied XLR connector, WRR-805A-optional K-1334 XLR cable required	WR-855A (64, 66, 68) WRR-810A (64,66,68) WRR-805A (64, 66, 68)	WRR-855A-1/4 WAVE ANTENNAS (x2) WRR-810A-1/4 WAVE (x1) WRR-805A-antenna, soft case, 1/8" cable	BTA-801 (Include plate adapter) (REQUIRED for WRR-855A) X-0248-167-1, dual plate adpter required for WRR-805A	WRR-855A(CH) (tuner)	WRR-855A(CH) (tuner)	WRR-855A(CH) (tuner)
HDW-700 HDW-700A									WRT-807A(CH) (transmitter)	WRT-860A(CH) w/ECM-77BC lavalier microphone	WRT-808A(CH) (plus any dymamic hand-held mic)
HDW-F900											
<b>BETACAM</b>											
UVW-100B	NP-1	BKW-L601 (INCLUDES A-8278-057-A bracket ) -or- Anton Bauer QRSP-200A, w/ABWMKKIT adapter	WRR-855A-4-PIN 12V DC (w/BTA-801) WRR-810A, WRR-805A-internal "AA" batteries (x2)	XLR (X2).	BTA-801A, WRR-810A supplied XLR connector, WRR-805A-optional K-1334 XLR cable required	WR-855A (64, 66, 68) WRR-810A (64,66,68) WRR-805A (64, 66, 68)	WRR-855A-1/4 WAVE ANTENNAS (x2) WRR-810A-1/4 WAVE (x1), case, XLR cable WRR-805A-antenna, soft case, 1/8" cable	BTA-801 (Include plate adapter) (REQUIRED for WRR-855A) X-0248-167-1, dual plate adpter required for WRR-805A	WRR-855A(CH) (tuner)	WRR-855A(CH) (tuner)	WRR-855A(CH) (tuner)
PVW-D30									WRT-807A (transmitter)	WRT-860A(CH) w/ECM-77BC lavalier microphone	WRT-808A68 (plus any dymamic hand-held mic)
PVW-D35									WRT-800A68 or WRT-807A(CH)	WRT-805A(CH) w/ECM-44BMP -or- WRT-822A(CH) w/ECM-77BC	Suggested microphones: F-740/9X F-780/X ECM-510
<b>BETCAM SP</b>											
BVW-300 BVW-300A	NP-1	BKW-L601 -or- BKW-L403 (INCLUDES A-8278-057-A bracket ) -or- Anaton Bauer QRSP-200A/400A w/ABWMK KIT adapter	WRR-855A-4-PIN 12V DC (w/BTA-801) WRR-810A, WRR-805A-internal "AA" batteries (x2)	XLR (X2).	BTA-801A, WRR-810A supplied XLR connector, WRR-805A-optional K-1334 XLR cable required	WR-855A (64, 66, 68) WRR-810A (64,66,68) WRR-805A (64, 66, 68)	WRR-855A-1/4 WAVE ANTENNAS (x2) WRR-810A-1/4 WAVE (x1), case, XLR cable WRR-805A-antenna, soft case, 1/8" cable	BTA-801 (Include plate adapter) (REQUIRED for WRR-855A) X-0248-167-1, dual plate adpter required for WRR-805A	WRR-855A(CH) (tuner)	WRR-855A(CH) (tuner)	WRR-855A(CH) (tuner)
BVW-400 BVW-400A									WRT-807A (transmitter)	WRT-860A(CH) w/ECM-77BC lavalier microphone	WRT-808A(CH) (plus any dymamic hand-held mic)
BVW-D600WS											
BVW-D600											
PVV-3									WRT-800A68 or WRT-807A(CH)	WRT-805A(CH) w/ECM-44BMP -or- WRT-822A(CH) w/ECM-77BC	Suggested microphones: F-740/9X F-780/X ECM-510
BVV-5			NONE								
<b>BETACAM SX</b>											



### Camcorder / Wireless Microphone Configuration Chart

<b>DNW-7</b>	V-wedge for Li-Ion battery Included. Built-in slot for WRR-855A	<b>A-8278-057-A</b> bracket (For 2nd WL unit only) -or- <b>Anton Bauer QR-SDH w/ABWMK KIT</b> adapter	<b>WRR-855A</b> supplied internally from camera	XLR (X2) (For externally mounted WL unit <u>ONLY</u> )	<b>BTA-801A, WRR-810A</b> supplied XLR connector, <b>WRR-805A</b> -optional K-1334 XLR cable required	<b>WR-855A</b> (64, 66, 68) <b>WRR-810A</b> (64,66,68) <b>WRR-805A</b> (64, 66, 68)	<b>WRR-855A-1/4 WAVE ANTENNAS (x2)</b> <b>WRR-810A-1/4 WAVE (x1)</b> , case, XLR cable <b>WRR-805A</b> -antenna, soft case, 1/8" cable	<b>BTA-801</b> (REQUIRED FOR SECOND WRR-855A)	<b>WRR-855A(CH) (tuner)</b>	<b>WRR-855A(CH) (tuner)</b>	<b>WRR-855A(CH) (tuner)</b>	
<b>DNW-9WS</b>			<b>WRR-855A</b> supplied internally from camera						<b>WRR-855A(CH) (tuner)</b>	<b>WRR-855A(CH) (tuner)</b>		
<b>DNW-90</b>			<b>WRR-855A</b> supplied internally from camera						<b>WRR-855A(CH) (tuner)</b>	<b>WRR-855A(CH) (tuner)</b>		
<b>DNW-90WS</b>			<b>WRR-855A</b> supplied internally from camera						<b>WRR-855A(CH) (tuner)</b>	<b>WRR-855A(CH) (tuner)</b>		
<b>DNV-5</b>			<b>WRR-855A</b> supplied internally from camera						<b>WRR-855A(CH) (tuner)</b>	<b>WRR-855A(CH) (tuner)</b>		
<b>DIGITAL BETACAM</b>												
<b>DVW-700</b>	V-wedge for Li-Ion battery & <b>A8278-057-A</b> bracket included	Anton Bauer <b>QR-SDH w/ABWMK KIT</b> adapter	<b>WRR-855A-4-PIN 12V DC (w/BTA-801)</b>	XLR (X2).	<b>BTA-801A, WRR-810A</b> supplied XLR connector, <b>WRR-805A</b> -optional K-1334 XLR cable required	<b>WR-855A</b> (64, 66, 68) <b>WRR-810A</b> (64,66,68) <b>WRR-805A</b> (64, 66, 68)	<b>WRR-855A-1/4 WAVE ANTENNAS (x2)</b> <b>WRR-810A-1/4 WAVE (x1)</b> , case, XLR cable <b>WRR-805A</b> -antenna, soft case, 1/8" cable	<b>BTA-801</b> (REQUIRED- Includes mounting hardware)	<b>WRR-855A(CH) (tuner)</b>	<b>WRR-855A(CH) (tuner)</b>	<b>WRR-855A(CH) (tuner)</b>	
<b>DVW-700WS</b>			<b>WRR-855A-4-PIN 12V DC (w/BTA-801)</b>						<b>WRR-855A(CH) (tuner)</b>	<b>WRR-855A(CH) (tuner)</b>		
<b>DVW-707</b>			<b>WRR-855A-4-PIN 12V DC (w/BTA-801)</b>						<b>WRR-855A(CH) (tuner)</b>	<b>WRR-855A(CH) (tuner)</b>		
<b>DVW-709WS</b>			<b>WRR-855A-4-PIN 12V DC (w/BTA-801)</b>						<b>WRR-855A(CH) (tuner)</b>	<b>WRR-855A(CH) (tuner)</b>		
<b>DVW-790WS</b>			<b>WRR-855A-4-PIN 12V DC (w/BTA-801)</b>						<b>WRR-855A(CH) (tuner)</b>	<b>WRR-855A(CH) (tuner)</b>		
<b>DVCAM</b>												
<b>DSR-130WS</b>	<b>NP-1</b>	Anaton Bauer <b>QRSP-200A w/ABWMK KIT</b> adapter	<b>WRR-855A-4-PIN 12V DC</b>	XLR (X2) Not used for DSR-300 and 500WS with <b>WRR855A / CA-WR855</b>	<b>BTA-801A, WRR-810A</b> supplied XLR connector, <b>WRR-805A</b> -optional K-1334 XLR cable required	<b>WR-855A</b> (64, 66, 68) <b>WRR-810A</b> (64,66,68) <b>WRR-805A</b> (64, 66, 68)	<b>WRR-855A-1/4 WAVE ANTENNAS (x2)</b> <b>WRR-810A-1/4 WAVE (x1)</b> , case, XLR cable <b>WRR-805A</b> -antenna, soft case, 1/8" cable	<b>BTA-801</b> (Include plate adapter)	<b>WRR-855A(CH) (tuner)</b>	<b>WRR-855A(CH) (tuner)</b>	<b>WRR-855A(CH) (tuner)</b>	
<b>DSR-200 DSR-200A</b>	-	<b>DSBK-201</b>	<b>WRR-810A, WRR-805A</b> -internal "AA" batteries (x2)						<b>BTA-801</b> (Include plate adapter)	-	-	-
<b>DSR-300 DSR-300A</b>	-	<b>CA-WR855</b>	<b>WRR-855A</b> powered through CA-WR855						<b>CA-WR855</b>	<b>WRT-807A(CH) or WRT-800A68</b>	<b>WRT-805A(CH) w/ECM-44BMP -or- WRT-822A(CH) w/ECM-77BC</b>	<b>WRT-808A68</b> (plus any dynamic hand-held mic) Suggested microphones: <b>F-740/9X</b> <b>F-780/X</b> <b>ECM-510</b>
<b>DSR-500WS</b>	-		<b>WRR-810A, WRR-805A</b> internal "AA" batteries (x2)						<b>CA-WR855 or BTA-801 / A-8278-057-A</b>	<b>WRT-807A(CH) or WRT-800A68</b>	<b>WRT-805A(CH) w/ECM-44BMP -or- WRT-822A(CH) w/ECM-77BC</b>	<b>WRT-808A68</b> (plus any dynamic hand-held mic) Suggested microphones: <b>F-740/9X</b> <b>F-780/X</b> <b>ECM-510</b>
<b>DSR-PD1</b>	-	-	<b>WRR-805A</b> internal "AA" batteries (x2)						1/8" MINIPLUG-BALANCED	WRR-805A-Supplied 1/8" minplug or optional K-1334 XLR cable	<b>WRR-805A</b> (64,66,68)	1/4 WAVE ANTENNA (x1), 1/8"-1/8" CABLE (x1). VINYL CASE
<b>DSR-PD100 DSR-PD100A</b>	-	-	<b>WRR-810A WRR-805A</b> -Internal "AA" batteries (x2)	1/8" MINIPLUG-BALANCED OR XLR BALANCED (x1)	WRR-805A-Supplied 1/8" minplug or optional K-1334 XLR cable	<b>WRR-805A</b> (64,66,68), <b>WRR-810A</b> (64, 66 & 68)	<b>WRR-810A</b> - XLR audio connector, antenna, case <b>WRR-805A</b> - 1/8"-audio CABLE , case	-	<b>WRR-805A(CH) (Tuner) plus WRT-800A68 or WRT-807A(CH) (Transmitter)</b>	<b>WRR-805A(CH) (Tuner) plus WRT-805A(CH) (Transmitter) + mic (ECM-44BMP or ECM-77BMP)</b>	<b>WRR-805A(CH) (Tuner) plus WRT-808A(CH) (Transmitter) + mic (F-740/9X or F-780/X)</b>	

### Camcorder / Wireless Microphone Configuration Chart

<b>DSR-PD150</b>	-	-	<b>WRR-810A</b> <b>WRR-805A</b> - Internal "AA" batteries (x2)	1/8" MINIPLUG- BALANCED (x1) OR XLR BALANCED (x2)	<b>WRR-810A</b> - Supplied XLR cable <b>WRR-805A</b> - Supplied 1/8" minplug or optional K-1334 XLR cable	<b>WRR-805A</b> (64,66,68)	1/4 WAVE ANTENNA (x1), 1/8"-1/8" CABLE (x1). VINYL CASE	-	SEE ABOVE	SEE ABOVE	SEE ABOVE
DV											
<b>DCR-VX1000</b> <b>DCR-VX2000</b>	-	-	<b>WRR-805A</b> - Internal "AA" batteries (x2)	1/8" MINIPLUG- BALANCED	<b>WRR-810A</b> - Supplied XLR cable <b>WRR-805A</b> - Supplied 1/8" minplug or optional K-1334 XLR cable	<b>WRR-805A</b> (64,66,68)	1/4 WAVE ANTENNA (x1), 1/8"-1/8" CABLE (x1). VINYL CASE	-	SEE ABOVE	SEE ABOVE	SEE ABOVE
<p>1) *The WRR-855A with the BTA-801, WRR-810A and the X-0248-167-1, use the same mounting system. These are all compatible with camcorder models using the BKW-L601, DSBK-201, BKW-L403, NP-1, BP-90B and Anton Bauer adapters. However, whereas the WRR-810A operates on it's own internal battery power, the WRR-855A will <i>ONLY</i> operate with power received from the camcorder battery.</p> <p>2) **The WRR-855A with the CA-WR855 adapter works <i>ONLY</i> with the DSR-300 &amp; 500(WS). The WRR-855A with no bracket or adapter, works <i>ONLY</i> with Betacam SX models (plug-in slot).</p>											